

H. L. BOUTON COMPANY
BOUTON COMPANY
H. L. BOUTON COMP



To Our Valued Customers,

The H.L. Bouton Company has been a trusted name in Safety Products for over 60 years. It was the first American company to make eye protection equipment the central focus of its business.

Continuing with our commitment to the development of quality safety products we have expanded our focus from eye protection and lens cleaning products to include Emergency Eye/Face and Combination shower units to meet any emergency situation.

With our complete line of Safety Eyewear, Lenscleaning Products and Emergency Eyewashes our focus and commitment will continue to supply our customers with innovative, up to date and quality products and service.

Very Truly Yours,



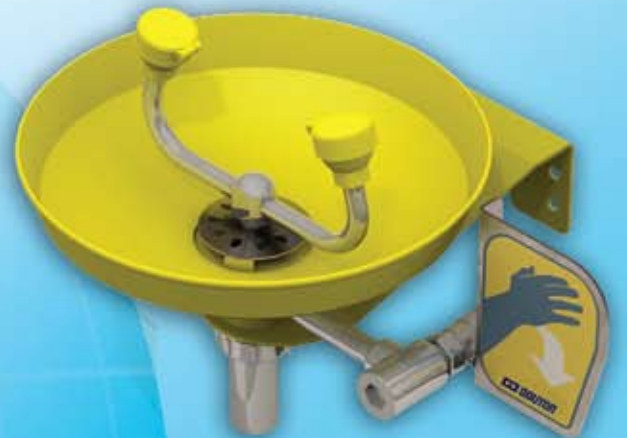
David F. Miller III
President & CEO
H.L. Bouton Co., Inc.



H. L. BOUTON COMPANY

CONTENTS

- 2 eyewear
- 6 goggles
- 8 visionaid
- 10 emergency equipment
- 12 accessories



H. L. BOUTON COMPANY

Mailing Address: P.O. Box 840, Buzzards Bay, MA 02532
Office/Distribution: 11 Kendrick Road, Wareham, MA 02571

Call Toll Free: 1-800-426-1881
Local: 508-295-3300
Fax: 508-295-3521

Web: <http://www.hlbouton.com>
E-mail: eyewear@hlbouton.com

EYEWEAR

Shark Hunter Series

The Shark Hunter Series offers innovative, first of their kind safety, style & comfort feature. Hidden spring hinge temples are just one of these added features.



6400 Shark Hunter Mako™

- Lightweight lens/frame combination
- 10-base single curve lens
- TrueView™ lens available
- Blocks 100% U.V.
- Meets ANSI standards



6500 Shark Hunter Hammerhead™

- Bayonet temple with rubberized tip
- Soft-Fit nose piece
- 7-base single curve lens
- TrueView™ lens available
- Blocks 100% U.V.
- Meets ANSI standards



6500 Shark Hunter Hammerhead Wire™

- Tortoise wire frame
- Soft-Fit nose piece
- 7-base single curve lens
- TrueView™ lens available
- Blocks 100% U.V.
- Meets ANSI standards



6600 Shark Hunter Springer™

- Hidden metal spring hinge
- Bayonet temple with ergo-grip temple pads
- Universal nose bridge
- Superior nylon material
- TrueView™ lens available
- Blocks 100% U.V.
- Meets ANSI standards



6700 Rage™

- Hidden metal spring hinge
- Bayonet style temples
- Accent temple pads
- 9-base polycarbonate lens
- Universal nose bridge
- Superior nylon material
- Ergo-grip temple pads
- TrueView™ lens available
- Blocks 100% U.V.
- Meets ANSI & UL standards





6800 Soft Brow™

- Enhanced peripheral vision
- Patented anti-slip adjustable nose piece
- Cushioned brow
- Mastoid temple pad
- Integrated sideshield
- Blocks 100% U.V.
- Meets ANSI standards



6000 Sting™

- Enhanced peripheral vision
- Patented anti-slip adjustable nose piece
- Cushioned brow
- Mastoid temple pad
- Integrated sideshield
- Blocks 100% U.V.
- Meets ANSI standards



7200 UFO Saturn™

- Single wrap-around lens design
- TrueView™ lens available
- Blocks 100% U.V.
- Meets ANSI & CE standards



7400 UFO Roswell™

- Durable Snap-Lock™ hinges
- 8-base single curve lens
- Blocks 100% U.V.
- Meets ANSI & CE standards

UFO Series

The UFO (User Friendly Optics) Series offers dramatic safety, style, & comfort features.



4400 UFO Stargaze™

- One-piece design
- Lightweight lens/frame combination
- 7-base single curve lens
- Blocks 100% U.V.
- Meets ANSI standards



7000 UFO Mercury™

- Weighs less than 1 oz.
- Frameless spectacle
- 2-way adjustable temple
- Blocks 100% U.V.
- Meets ANSI & CE standards



7100 UFO Apollo™

- Click-To-Fit™ adjustable temples
- Soft vinyl nose piece
- 6-base slimline lens
- Blocks 100% U.V.
- Meets ANSI standards

Bold Series

Bouton's BOLD Series features advanced protection, comfort & style. Specially engineered lens designs provide maximum defense, while lightweight, Resilium™ frames protect in comfort.



6200 BOLD Professional™

- Radical new air flow sideshield design
- Bow-Flex bayonet style temples with ergo-grip
- Soft-Fit nose piece
- Specially designed lens channel retention
- 6-base single curve lens
- TrueView™ lens available
- Blocks 100% U.V.
- Meets ANSI standards



6300 BOLD B2K™

- Radical new air flow sideshield design
- Bow-Flex bayonet style temples with ergo-grip
- Soft-Fit nose piece
- Specially designed lens channel retention
- TrueView™ lens available
- Blocks 100% U.V.
- Meets ANSI standards

BRAND NEW SERIES

Xtreme Fashion & Comfort



XFC 9100

- Unique single lens design
- Lightweight nylon half frame
- Soft flexible ribbed rubberized temple tips and nose for secure fit
- Blocks 100% UV
- Meets ANSI standard



XFC 9200

- Lightweight, single lens, quarter frame design
- 8 Base Curve lens with integral nose piece
- Conventional Temples
- Available in several lens colors and Polynium Plus™
- Blocks 100% UV
- Meets ANSI Z87 standards

Our Vision Protects Yours

EYEWEAR

Single Lens Spectacle Series

The lightweight, comfortable fit of the Single Lens Safety Spectacles encourage voluntary compliance.



4100 Econolite I™

- Distortion-free sideshields
- Light-weight, yet durable
- Economical nylon frame
- Blocks 100% U.V.
- Meets ANSI standards



4300 Econolite III™

- Adjustable Click-To-Fit™ temple
- Seamlessly integrated sideshields
- Economical nylon frame
- Blocks 100% U.V.
- Meets ANSI & CE standards



7700 VS Plus™

- Visitor spectacle
- Blocks 100% U.V.
- Meets ANSI & CE standards



7800 OGS™

- Oversized wraparound style fits over most prescription glasses
- Unique temple venting system helps reduce heat buildup
- Blocks 100% U.V.
- Meets ANSI standards



7800 Panalens™

- Hard-coated one-piece, distortion-free polycarbonate lens
- Available in various colors including IR shades 2.0 & 5.0
- Blocks 100% U.V.
- Meets ANSI & CE standards



8200 Pinnacle II™

- Innovative Flex-Radius™ frame
- Brace-Bar® reinforces the lens & secures the nosepiece
- Click-To-Fit™ temple comfort settings
- Blocks 100% U.V.
- Meets ANSI, UL & CE standards





- 8300 Panalite™**
- Frame is made of ultra-light nylon
 - Wide range of lens colors including 3.0 & 5.0 IR
 - Blocks 100% U.V.
 - Meets ANSI & CE standards



- 8600 Panaspec Plus™**
- Patented Brow Bar®
 - Maximum protection from overhead flying particles
 - Blocks 100% U.V.
 - Meets ANSI & CE standards



- 8800 Panaspec™**
- Integrated sideshields
 - Blocks 100% U.V.
 - Meets ANSI & CE standards

Metal Frame Spectacle Series

The contemporary design of the H.L. Bouton Metal Frame Series combines safety with quality & style.



- 2200 Metal Aviator™**
- Dual lens aviator design
 - Hardcoated polycarbonate lenses
 - Available with or without sideshields
 - Blocks 100% U.V.
 - Meets ANSI & CE standards



- 2600 Pinnacle I™**
- Unobstructed peripheral vision
 - Seamlessly integrated sideshields
 - Blocks 100% U.V.
 - Meets ANSI standards

Dual Lens Spectacle Series

The economical & lightweight design of H.L. Bouton's Dual Lens Series couples value & safety.



- 4200 Econolite II™**
- Dual replaceable lenses
 - Lightweight nylon frame
 - Blocks 100% U.V.
 - Meets ANSI standards



- 5900 Spectacle™**
- Patented U-Fit® temples & universal bridge
 - Long-lasting heavy duty metal hinges
 - Optional sideshields
 - Blocks 100% U.V.
 - Meets ANSI standards



- 9500 Aviator™**
- Aviator design
 - Blocks 100% U.V.
 - Meets ANSI CE standards



- 9900 Brow Bar®**
- Unique flange design
 - Protects from frontal impacts & falling overhead debris
 - Blocks 100% U.V.
 - Meets ANSI & CE standards

Safety Glasses with Power



- Safety Reading Glasses "SRG"™**
- Stylish nylon frame, ergo-grip temples and soft nose piece
 - Available in Weak, Medium & Strong lenses
 - Available in Clear & Smoke lenses
 - Blocks 100% U.V.
 - Meets ANSI Z87.1+ standards

BRAND NEW STYLES



- 6900 HiVizion™**
- Hi Vizability soft padded brow and rubberized temple tips
 - Unique single lens design and lightweight nylon frame
 - No metal parts, Optional headband strap snaps on for easy removal
 - Blocks 100% U.V.
 - Meets ANSI standards



- 4040 Ricochet™**
- One piece wraparound style
 - Lightweight lens/frame combination
 - Blocks 100% U.V.
 - Meets ANSI standards

Our Vision Protects Yours

GOGGLES

Bouton is known for its superior quality protective goggles. Models are available for protection against impact, liquid splash, dust, fumes & flying debris. Fogless lenses are available for extreme conditions.



450 Rubber Goggle™

- Protects against dust
- Excellent peripheral vision
- Indirect Ventilation
- Blocks 100% U.V.
- Meets ANSI & CE standards



451 Rubber Goggle™

- Protects against dust & liquids
- Excellent peripheral vision
- Non-vented
- Blocks 100% U.V.
- Meets ANSI & CE standards



450 Fire Goggle™

- Non-vented design protects against gases, smoke, fluids, flying particles, & debris
- .075 inch ballistic grade lens molded from optical grade impact resistant polycarbonate
- Anti-fog coating on both sides of lens
- Passes NFPA 500 degree Fahrenheit 5 minute heat test and will not melt or retain flame
- All mounting hardware included
- Structural goggle complies with NFPA 1971 standards



5500 UFO Galaxis™

- Fashionable spectacle/goggle design
- Direct ventilation
- Pliable one-piece frame
- Available in 3.0 & 5.0 IR lens shades
- Available with or without foam
- Blocks 100% U.V.
- Meets ANSI & CE standards





- 550 Softsides® Goggle**
- Direct side ventilation
 - Provides protection from flying particles
 - Blocks 100% U.V.
 - Meets ANSI & CE standards



- 551 Softsides® Goggle**
- Plastic hooded vents for indirect ventilation
 - Blocks 100% U.V.
 - Meets ANSI & CE standards



- 441 Basic-IV Goggle™**
- Indirect ventilation
 - Clear, recyclable vinyl body
 - Blocks 100% U.V.
 - Meets ANSI & CE standards



- 440 Basic-DV Goggle™**
- Direct ventilation
 - Clear, recyclable vinyl body
 - Blocks 100% U.V.
 - Meets ANSI & CE standards



- 560 Panagoggle™**
- Optimum protection against chemical splash
 - Liquid barrier indirect vent system
 - Blocks 100% U.V.
 - Meets ANSI standards



- 240 Panalens Goggle™**
- Ultimate in gas welding protection
 - Lightweight opaque vinyl frame
 - 2" x 4 1/4" welding filter plate
 - Allows the use of RX glasses
 - Blocks 100% U.V.
 - Meets ANSI standards



- 650 Gas Welding Goggle**
- Supplied with 50mm welder filter lenses with a protective cover lens.
 - Both lenses are held in place by a poly carbonate ring.
 - A bead chain inside a plastic nose bridge provides easy adjustment for individual fit and comfort
 - Standard Elastic headband
 - Meets ANSI Z87 standards

Medical Shields



- Medical Shields**
- Lightweight wraparound disposable shield
 - Nylon Frame, One size fits all
 - Shield snaps onto frame and pops off for quick and easy change
 - .010 thick clear polycarbonate lens
 - Ideal for Bloodborne Pathogen situations



- Interchangeable Frames**
- Frame snaps into shield and pops off for quick and easy change
 - Multiple colors

Youth Products



- Smoggle™**
- 15% smaller than standard goggles
 - Available in direct and indirect ventilation
 - Clear vinyl body provides comfort, fit & durability
 - Blocks 100% U.V.
 - Meets ANSI standards



- “Mini” 4300™**
- 15% smaller than standard eyewear
 - Adjustable click-to-fit temple
 - Economical nylon frame
 - Seamlessly integrated sideshields
 - Clear polycarbonate lens
 - Blocks 100% U.V.
 - Meets ANSI standards

BRAND NEW



- 5300 Contempo Goggle™**
- Modern wraparound style with distortion free panoramic view lens
 - Designed to fit over most prescription spectacles
 - 1" wide elastic strap with adjustable buckle attaches to frame with a swivel clip for comfortable fit
 - Nose area split to adapt to most nose shapes
 - Indirect venting for liquid splash protection
 - Blocks 100% U.V.
 - Meets ANSI standards

Our Vision Protects Yours



VisionAid®

Lenscleaning Liquids & Cleaners

A clear, scratch-free field of vision is important to anyone wearing protective eyewear. Bouton offers a complete line of Lenscleaning Systems, available in disposable or permanent stations.



1LC5000D



1LC382D



1LC3000D



1WD1200



1WD608



1WD500

Lenscleaning Disposable Dispensers

- Dispensers can be positioned close to workers & easily moved
- **1LC5000D** Large Dispenser containing 16 oz. Visionaid® cleaner & 2 packs of 1LC1776 heavy duty tissues
- **1LC382D** Small Dispenser containing 3.5 oz. of Visionaid® cleaner & 1 pack of heavy duty tissues
- **1WD500** Large Dispenser containing 16 oz. of Wilkins Anti-Fog/Anti-Static cleaner & 2 packs of 1LC1776 heavy duty tissues
- **1WD1200** Large Double Dispenser containing 16 oz. of Wilkins Anti-Fog/Anti-Static cleaner & 4 boxes of 730 K-Lens-M lint free tissues
- **1WD608** Small Dispenser containing 8 oz. of Wilkins Anti-Fog/Anti-Static cleaner & 2 boxes of 730 K-Lens-M® lint free tissues fog/Anti-Static
- **1LC3000D** Plastic Disposable Lenscleaning station. Contains 8 oz. bottle of Visionaid® Lenscleaning solution and heavy duty 4 1/2" x 5" tissues



All tissues in VisionAid® stations are made from 100% recycled materials. This is one of many ways that H.L. Bouton Co. is going green.



1LC1776DU

1LCR24D



1WK600

Metal Lenscleaning Stations

- Durable in hot & humid environments, refillable & can be fixed in key locations
- **1LCR24D** Small Metal Dispenser holds approximately 300 rayon tissues
- **1LC1776D** Metal Dispenser w/key empty
- **1LC1776DU** Metal Dispenser w/key holds 16 oz. liquid cleaner 1 pack of heavy duty tissues
- **1WK600** Metal Dispenser Holds 8 oz. K-Lens-M® Pink Lens Cleaner and 2 boxes of 730 K-Lens-M® tissues



Lensclean Liquid Cleaners

- All H.L. Bouton Lenscleaning formulas are safe for cleaning glass, plastic and polycarbonate lenses
- Eliminate static with anti-fog solution
- Total compliance with OSHA standards
- VISIONAID heavy-duty, silicone-based anti-fog solution is also available

Lensclean Tissues

- Strong & won't scratch lenses, High Quality, Made of 100% recycled fiber
- **1LC1760** VISIONAID® 7 1/2" x 5"
- **1LC1776** VISIONAID® 6" x 5"
- **1LCR24** VISIONAID® RAYON 6 1/2" x 3"
- **1WT730** K-Lens-M® Lint Free Tissue 4 1/4" x 8 1/2"

- **1LCL2112** 2 oz. bottle VISIONAID® lenscleaning solution
- **1LCL211B** 16 oz. bottle VISIONAID® lenscleaning solution
- **1LCL216** 15 oz. aerosol VISIONAID® lenscleaning solution
- **1LCL211C** 1 gallon bottle VISIONAID® lenscleaning solution
- **1W203SP** 2 oz. bottle K-Lens-M® Cleaner with spray pump
- **1W208** 8 oz. bottle K-Lens-M® Cleaner
- **1W216** 16 oz. bottle Lens-M® Cleaner
- **1W297-4** 1 gallon K-Lens-M® Cleaner
- **1W503SP** 2 oz. Wilkins Anti Fog-Anti Static Cleaner w/ Spray pump
- **1W508** 8 oz. Wilkins Anti Fog-Anti Static Cleaner
- **1W516** 16 oz. Wilkins Anti Fog-Anti Static Cleaner
- **1W597-4** 1 gallon Wilkins Anti Fog-Anti Static Cleaner

Towelettes



SafteyClean™

1LCT100

- Pre-moistened towelettes
- Individually foil-packaged
- Ideal for industrial, office, or lab environments
- 100 towelettes per dispenser

PPE TOWELETTES

(Personal Protection Equipment)
Efficiently cleans and prevents cross contamination

- **1LPPE100** Contains No Alcohol
- **1LPPE200** Contains Alcohol

SafteyClean Handi-Pak™

1LCT200

- Pop-up lens cleaning tissues
- Cleans & coats the lens with anti-fog & anti-static solutions
- Ideal for tool boxes, gloves boxes, desk drawers, or work stations
- 36 pop-up towelettes per container



First Aid Eyewash

Eye Cups

01008 Sterile & 01012 Bulk

- Eye Cups are safety-sealed & dated for freshness
- Plastic-molded to eliminate mess
- Eye Cups sold in sterile packages & non-sterile quantities

First Aid Eye Wash

- Contains two natural phosphate buffers & no eye irritants
- Provides the optimum environment for the eye to heal itself
- **01014** 4 oz. eyewash
- **01042** 4 oz. eyewash w/sterile eye cup

Quick-pour Bottle Refills

- **01019** 16 oz. Boston Round
- **01024** 32 oz. Boston Round



Clean Means Safe

EMERGENC

EYEWASH & FACEWASH

1PE001

- Wall mounted eyewash with plastic bowl
- ABS plastic spray heads
- Inline strainer and stay-open ½" ball valve with a push handle
- Meets ANSI Z358.1



1PEF001

- Wall mounted eye/face wash with plastic bowl
- ABS plastic spray heads
- Inline strainer and stay-open ½" ball valve with a push handle
- Meets ANSI Z358.1

1PEF002

- Wall mounted eyewash with stainless steel bowl
- ABS plastic spray heads
- Inline strainer and stay-open ½" ball valve with a push handle
- Meets ANSI Z358.1



1PEF003

- Deck mount swivel eye/face wash that is installed next to a sink
- ABS plastic eye/face wash spray heads
- Eye/face wash swings out horizontally over the sink from the right side
- Water flow is activated automatically
- Meets ANSI Z358.1

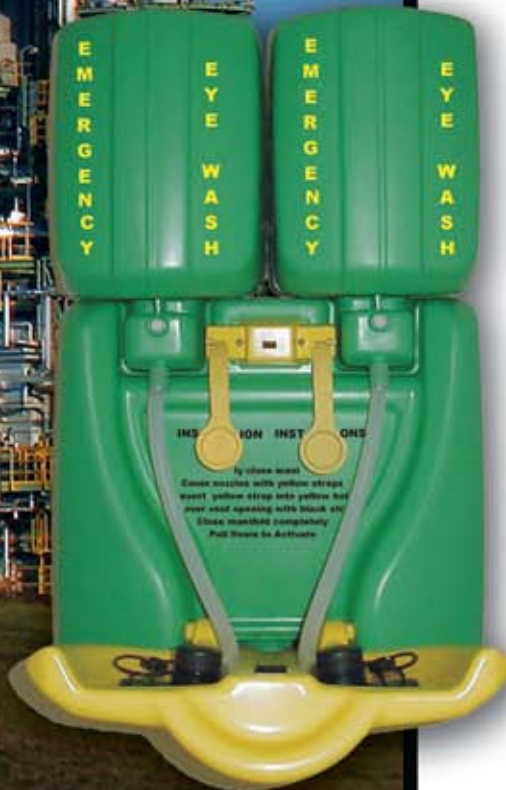


1PEF004

- Wall mount swivel eye/face wash that is installed behind a sink
- ABS plastic eye/face wash spray heads
- Eye/face wash swings down over the sink from the rear
- Water flow is activated automatically
- Meets ANSI Z358.1



Wearing ill-fitting eyewear, or the wrong eyewear for the job, can contribute to sustaining eye injuries. While OSHA mandates employers assess their workplaces for possible hazards & provide the proper eyewear for each job, eye injuries still occur at alarming rates each day. In the event an accident should occur, causing dust, particles, or other matter to enter the eye, Bouton offers emergency relief with our emergency eye wash products.



CY EQUIPMENT

EYEWASH & FACEWASH



01106

- Wall mount 6 gallon unit delivers 6 minute flow in less than 1 second
- Wall bracket, bacteriostatic additive, test log card and drainage hose is included
- Meets ANSI standard for personal eyewash units



01107

- Wall mount 7 gallon Primary eyewash station with quick one-step activation
- 50% lighter than conventional systems.
- Has 2 rigid bottles of flushing fluid
- Delivers 15 minute flow in less than 1 second
- Includes steel wall bracket, bacteriostatic additive, test log card and drainage hose
- Meets ANSI Z358.1



01116

- Wall mount 16 gallon Primary eyewash station
- Quick one-step activation delivering 15 minute flow in less than 1 second
- Includes steel wall bracket, bacteriostatic additive, test log card and drainage hose
- Meets ANSI Z358.1

Additional Supplies & Refills



- Preservative Concentrate
- Bacteriostatic Additive available for 6 and 16 Gallon
- **01206** 70 oz. for 6 Gallon
- **01216** 180 oz. for 16 Gallon
- **01200** 8 oz.



COMBINATION STATIONS, SHOWERS & DRENCH HOSES



1PC001

1PC001 & 1PC002

- Pedestal mounted combination station with an eyewash
- Plastic Bowl
- ABS plastic eyewash spray heads
- Inline strainer and stay-open 1/2" ball valve with push handle
- Shower with plastic showerhead and 1" stay-open ball valve with a pull rod
- Meets ANSI Z358.1



1PES001

1PES001

- Vertically mounted emergency shower
- Plastic showerhead and 1" stay-open ball valve with a pull rod
- Meets ANSI Z358.1



1PD001

1PD001

- Wall-mounted eye/face and body drench hose
- ABS plastic eye/face wash spray head
- Stay-open squeeze lever valve and eight foot reinforced PVC hose
- Meets ANSI Z358.1

1PD002

- Deck mounted eyewash and body drench hose
- ABS plastic eyewash spray heads
- Stay-open squeeze lever valve and eight foot reinforced PVC hose
- Meets ANSI Z358.1

Emergency Eyewash



- Deliver sterile, isotonic, double-buffered relief in seconds
- Bottles dated for freshness
- Refills available
- National Drug Code numbers are printed on every bottle
- **01018** 16 oz. Boston Round
- **01019** 16 oz. Boston Round double module
- **01022** 32 oz. Boston Round
- **01023** 32 oz. Boston Round double module

ACCESSORIES

Faceshields, Accessories & Fire First Aide

Misplaced eyewear is a frustration of the past with the use of Bouton's accessories. Offering several means of keeping eyewear handy, clean & safe from damage adds to the life of much needed safety spectacles.



Fire Suppressant

- Biodegradable Fire Suppressant
- 100% Natural Fire First Aide is the safest & most effective way to control small class A & B fires
- Air powered, environmentally safe & hypoallergenic spray
- Water based, pH neutral & contains no chlorofluorocarbon or hydrocarbons
- Can be sprayed in any position, even upside down, & may be reused until the container is empty
- Naturally controls & prevents re-ignition of small fires in wood, plastic, paper, grease, oil, or gasoline



Headgear & Faceshields

- Floating suspension design
- Adjustable tension pivot assembly
- Headgear & windows sold separately
- Meets ANSI standards
- Multi-Colored Headgear (61-3840-00)
- Blue Colored Headgear (61-0000-00)
- Molded Polycarbonate Clear Faceshield (61-0815-10)
- Aluminum Binding Polycarbonate Clear Faceshield (61-0815-11)
- Flat Acetate Clear Faceshield (61-0815-20)
- Flat Petg Clear Faceshield (61-0815-30)

Bouton Counter Display

- Modern rotary display
- Holds 36 pairs of safety glasses
- Minimum amount of counter space
- **3SD36S**

New Smaller Counter Display

- Clear Lucite Counter Display
- Holds 6 pr. of spectacles
- Takes only 7 inches of counter space
- Measures 6"x 7"x 21" tall
- **3SD06S**



Nylon Cords

- Fashionable nylon cords
- Hold safety glasses firmly without slippage
- **99540** Black
- **99541** Safety Orange
- **99543** Red
- **99544** White
- **99675** Black with slide adjustment



Slip-On Sideshields

- Flexible sideshields are engineered to fit all types of eyewear
- **99700**



Flex Sideshields™

- Molded to a bendable softness
- Temple folds correctly
- No parts or tools required
- Weaves through temple
- Blocks 100% U.V.
- Conforms to ANSI standards
- **99705** Clear
- **99706** Smoke
- **99707** Green



RX Adapter™

- Allows a person to wear prescription lenses with Rubber Goggle™
- Easily snaps into place within the goggle
- **990RX**



Galaxis Transporter™

- Holds Galaxis Goggle & replacement lenses comfortably
- Has both a belt loop & a clip for comfortable clothing attachment
- Easy accessibility
- **990GT**



Shuttle™

- Protective case for Bouton eyewear
- Shuttle also features a belt loop for easy attachment
- Easy accessibility
- **990SH**



Eyewear Carry Case

- Nylon carrying case is soft & durable
- Expands to fit a wide range of safety glass styles
- **99655**



GUIDE TO EYE PROTECTION EQUIPMENT

Operation or Machine

Eye Hazard

Recommended Eye Protection Devices

AUTOMOTIVE, AIR, MARINE & POWER EQUIPMENT REPAIR & SERVICING

Arc Welding	Welding Flash, flying sparks	557; 650 or 5900; 9500; 8300; 7200; 9900 All with sideshields under welding helmet (in combination with IR lens)
Gas Welding, cutting and burning and Gas Brazing	Flying sparks and metal	557; 650; 240; over 5900; 8300; 7200; 9500; 9900 with sideshields and shade 5.0 IR lens.
Chiseling, drilling, grinding, sanding, chipping & compressed air	Flying particles & sparks	440; 441; 550; 551; 5300; 557; 560; 2200; 5500; 5900; 6000; 6200; 6300; 6400; 6500; 6600; 6700; 6800; 6900; 7000; 7100; 7200; 7400; 7800; 7800OGS; 8300; 8600; 8800; 9500; 9700; 9900 All with sideshields
Lubrication, spray painting, steam & solvent cleaning	Grease, oil, hot steam, mists splashing materials	451; 551; 552; 560; 441; 442; 5300 and 5500
Carpentry/All Operations	Flying nails & stock kickback, chips, dust	440; 441; 550; 551; 5300; 557; 560; 2200; 5500; 5900; 6000; 6200; 6300; 6400; 6500; 6600; 6700; 6800; 6900; 7000; 7100; 7200; 7400; 7800; 7800OGS; 8300; 8600; 8800; 9500; 9700; 9900 All with sideshields
CHEMICAL HANDLING	Splashing and/or spilling	441; 451; 551; 552; 560; 5300; 5500
FOOD & BEVERAGE PROCESSING	Splashing liquids, grease, chemical cleansing agents, flying particles & objects	441; 451; 551; 552; 5300; 557C; 240C; 560; 442; 5500 All under a face shield

FOUNDRY WORK

Chipping & grinding, core & mold making	Flying chips, sand & Parting compound	240; 557; 560; 2200; 4100; 4200; 4300; 4400; 5900; 6000; 6200; 6300; 6400; 6500; 6600; 6700; 6800; 6900; 7000; 7100; 7200; 7400; 8300; 8600; 8800; 9500; 9700; 9900 All with sideshields
Heating & pouring metal	Splashing & sputtering molten metal	240; 650-3 Under a face shield

METAL WORK

(All metal work including plumbing & pipe fitting) Annealing & heat treating, bending & shaping metals, drilling, etching, forging, grinding, metal spinning, riveting, sawing, snipping, soldering, tinning, cleaning & finishing	Flying particles & projectiles, lubricants, lint, abrasives, rivets, sputtering solder, flux & fluids	440; 441; 550; 551; 552; 5300; 560; 2200; 4100; 4200; 4300; 4400; 5500; 5900; 6000; 6200; 6300; 6400; 6500; 6600; 6700; 6800; 6900; 7000; 7100; 7200; 7400; 7800; 7800OGS; 8300; 8600; 8800; 9500; 9700; 9900 All with sideshields
Molten Metal		650; 557; 240; 450; 560; 5500 Under a face shield for severe exposure

PAINTING

Spray painting, coating & related operations	Spray, splashing	441; 551; 552; 5300; 450; 557C; 560; 5500
--	------------------	---

PLASTICS & OTHER SYNTHETIC MATERIALS

Buffing, carving, drilling, forming, sanding, sawing, sealing, shaping and wrapping	Flying dust	440; 441; 550; 551; 552; 5300; 560; 2200; 4100; 4200; 4300; 4400; 5500; 5900; 6000; 6200; 6300; 6400; 6500; 6600; 6700; 6800; 6900; 7000; 7100; 7200; 7400; 7800; 7800OGS; 8300; 8600; 8800; 9500; 9700; 9900 All with sideshields
Molding, heating, mixing, pouring	Splashing & spilling	551; 552; 560; 451; 441; 442; 5300; 5500 All under face shield when severe exposure

PLATING

Pickling, plating, handling of acids, caustics, cleaning operations	Splashing, and/or spilling	551; 552; 560; 451; 441; 442; 5300; 5500 All under face shield when severe exposure
---	----------------------------	---

STONE, CLAY, GLASS & CONCRETE WORK

	Flying chips & dust splashing	441; 450; 552; 5300; 560; 557C; 650C; 5500
--	-------------------------------	--

WELDING

Electric arc, inert gas	Welding flash, flying sparks, flux, spattering welds, fumes, gases	2200; 4100; 4200; 4300; 4400; 5300; 5500; 5900; 6000; 6200; 6300; 6400; 6500; 6600; 6700; 6800; 6900; 7000; 7100; 7200; 7400; 7800; 7800OGS; 8300; 8600; 8800; 9500; 9700; 9900 All with sideshields under a welding helmet
Spot Resistance Welding	Flying sparks	240-5; 650-5; 557-5; 8300-5; 7200-5
Chipping welds & other work	Flying chips, slag, sparks	240-5; 650-5; 557-5; 8300-5; 7200-5

Face shields or helmet in addition to eye protection are recommended for any severe exposure.



H. L. BOUTON COMPANY

Mailing Address: P.O. Box 840, Buzzards Bay, MA 02532

Office/Distribution: 11 Kendrick Road, Wareham, MA 02571

Call Toll Free: 1-800-426-1881

Local: 508-295-3300

Fax: 508-295-3521

Web: <http://www.hlbouton.com>

E-mail: eyewear@hlbouton.com